



pentland hills
regional park

Pentland Hills

Visitor Guide and map

www.pentlandhills.org



Know the code

Enjoying Scotland's outdoors responsibly



Everyone has the right to be on most land and inland water providing they do so responsibly. Your access rights and responsibilities are explained fully in the Scottish Outdoor Access code.

- take responsibility for your own actions
- respect the interests of other people
- care for the environment.

Whether you're in the outdoors or managing the outdoors, there are three key things:

For practical advice and information relating to the Scottish Outdoor Access Code visit: www.outdooraccess-scotland.scot

Reducing congestion in the Pentland Hills

Avoid car congestion at Bonaly, Flotterstone, Harlaw and Threipmuir:



- Walk or cycle
- Use public transport:
Lothian Buses: numbers 4, 10, 11, 16, 27 and 44. Visit www.lothianbuses.com or phone Traveline Scotland **0871 200 2233**. Stagecoach West Scotland: numbers 101, 102. Visit www.stagecoachbus.com or phone Traveline Scotland **0871 200 2233**
- Weekends are very busy – park instead at Boghall, Carlops, Castlelaw, Dreghorn, Hillend, Nine Mile Burn/Swanston.



pentland hills
regional park

Contact us

Pentland Hills Regional Park HQ
Hermitage of Braid
69a Braid Road
Edinburgh
EH10 6JF
Telephone: **0131 529 2401**
Duty officer: **07798 505301**
email: pentlandhills@edinburgh.gov.uk
www.pentlandhills.org

Images supplied by: Dwayne Telford, Dougie Cockburn, Susan Sutherland, Mike Clarke, Susan Kirby, Jenny Brown, Jerry Balloch.

Designed by the City of Edinburgh Council.
Corporate Governance 18.090/CE/SG/May2019.
Printed by the City of Edinburgh Council Print Services.

Supported by



HAPPY TO TRANSLATE

You can get this document on tape, in Braille, large print and various computer formats if you ask us. Please contact the Interpretation and Translation Service (ITS) on 0131 242 8181 and quote reference number 19-4855. The ITS can also give information on community language translations.

The Pentland Hills Regional Park is a *living, working landscape* which consists of around 10,000 hectares of countryside and 100km of paths. It's a protected landscape containing a rich mosaic of farmed land, heather moorland, reservoirs, woodland and hills.



Donation scheme for the Pentland Hills Regional Park

The donation scheme is an easy way for people to put something back into the Hills. It allows you to make a donation for environmental improvements. All funds raised go towards projects that enhance and protect the Pentland Hills Regional Park.

Donate with your mobile! Download the

RingGo App or call **0131 516 4000** to pay by debit/credit card. To donate use the following codes:

£2 - **12558** £5 - **12562** £10 - **12563**

For more information and to donate please visit the Regional Park's website at www.pentlandhills.org

Explore the Pentlands

Suggested circular routes



Glencorse View (2.7 miles/4.5 km) Moderate

From Flotterstone Information Point, follow the Heron waymarkers along the burn to Glencorse Reservoir. Return via the Castlelaw path, enjoying great views of the glen.



Harlaw Woodland (2 miles/3.5 km) Easy

From Harlaw House Visitor Centre, follow the Squirrel waymarkers around Harlaw Reservoir. Enjoy spectacular views of Black Hill, with Turnhouse Hill and West Kip in the distance.



Capital View (2.5 miles/4 km) Moderate/Strenuous

From Hillend Country Park lower car park, follow the Castle waymarkers, taking in spectacular views of Edinburgh and the Firth of Forth.



Torduff Water (1.5 miles/2.5 km) Moderate

From the car park at Bonaly Country Park, follow the Tap waymarkers through the woodland to Torduff Reservoir. Enjoy views of the moorland and across Edinburgh.

The full 100km of waymarked paths are shown on the map over leaf.

Respect the landscape when you visit the Hills

Respect the interests of other people

– all responsible visitors are welcome in the Regional Park. Acting with courtesy, consideration and awareness is very important. Make sure that you respect the privacy, safety and livelihoods of those living or working in the hills, and the needs of other people enjoying the outdoors.

Care for the environment – the paths in the Regional Park are vulnerable to erosion. Please be mindful of path conditions in poor weather. Take litter home with you. Bag and bin your dog's poo.

Take responsibility for your own actions – you may come across the following on the 100km waymarked path network: gates, stiles, bridges, dykes and drainage structures. Please respect these features. Remember that the hills can't be made risk-free and act with care at all times for your own safety and that of others.

A living, working landscape

January/February

Pregnant sheep. Please keep your dog on a short lead or close at heel.



Mid March/April

Sheep Lambing. Disturbance may separate lambs from their mothers. Please keep your dog on a short lead or close at heel.



April-July

Birds Nesting. Please keep your dog on a short lead or close to heel.

May-September

High fire risk. Please don't light fires in woodlands and leave no trace.

August-January

Game Shooting. Please follow the advice on posted signs.



August/September

Harvest. Large machinery require access to fields. Please park your vehicle sensibly and do not block access to gates.

November/December

Sheep Topping. Disturbance or gates left open can ruin the breeding season. Please keep your dog on a short lead or close at heel.



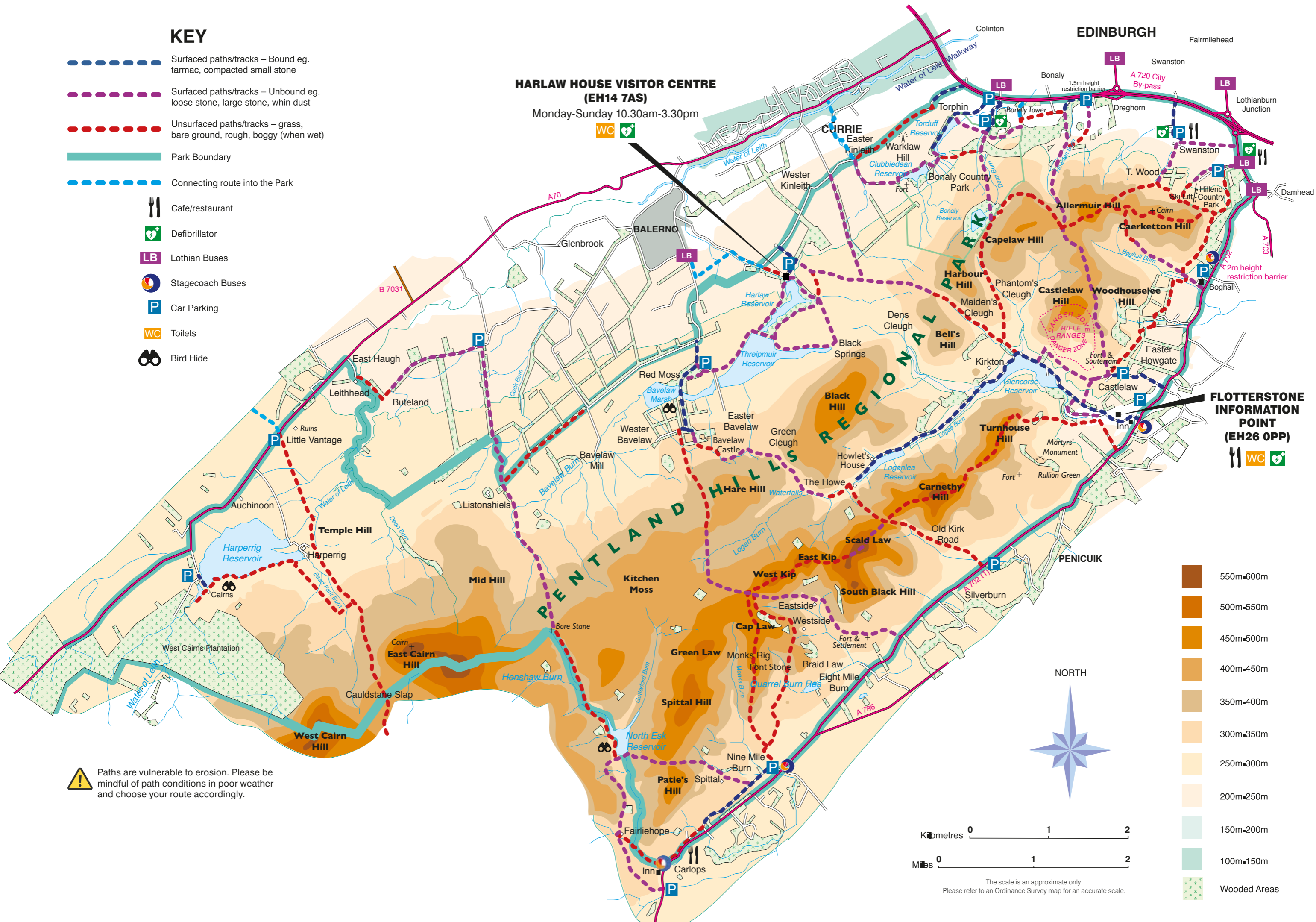
KEY

- Surfaced paths/tracks – Bound eg. tarmac, compacted small stone
- Surfaced paths/tracks – Unbound eg. loose stone, large stone, whin dust
- Unsurfaced paths/tracks – grass, bare ground, rough, boggy (when wet)
- Park Boundary
- Connecting route into the Park
- Cafe/restaurant
- Defibrillator
- Lothian Buses
- Stagecoach Buses
- Car Parking
- Toilets
- Bird Hide

HARLAW HOUSE VISITOR CENTRE (EH14 7AS)
Monday-Sunday 10.30am-3.30pm

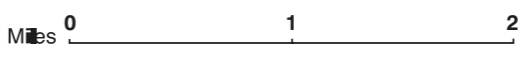
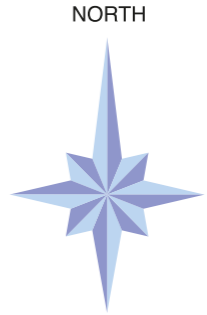
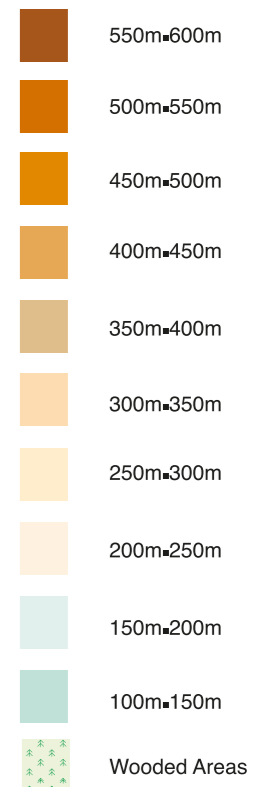
EDINBURGH

Fairmilehead



FLOTTERSTONE INFORMATION POINT (EH26 0PP)

- Cafe/restaurant
- Toilets
- Defibrillator



The scale is an approximate only. Please refer to an Ordnance Survey map for an accurate scale.

Paths are vulnerable to erosion. Please be mindful of path conditions in poor weather and choose your route accordingly.